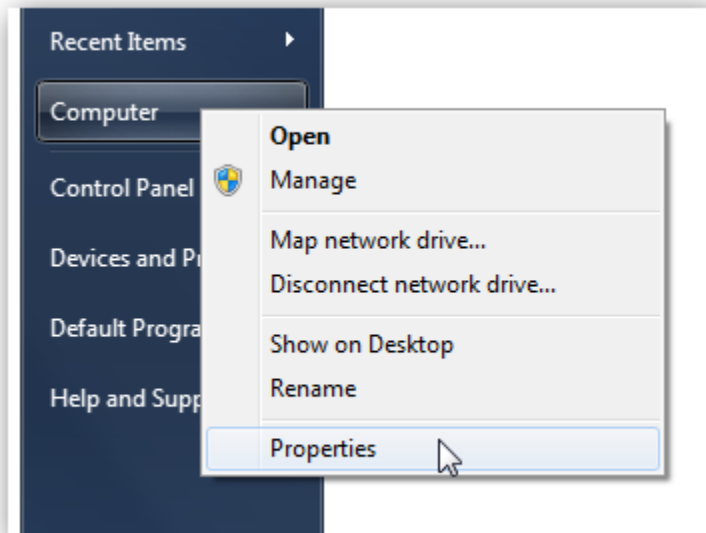
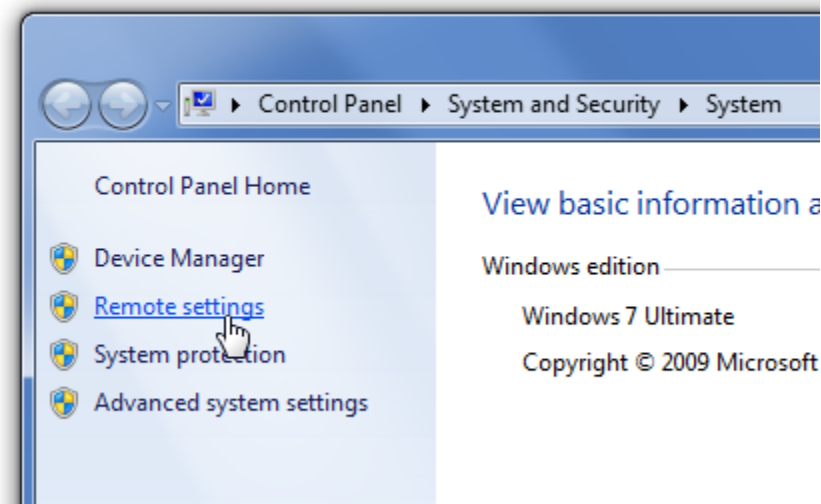


Getting to the Remote Desktop Settings in Windows 7 or Vista

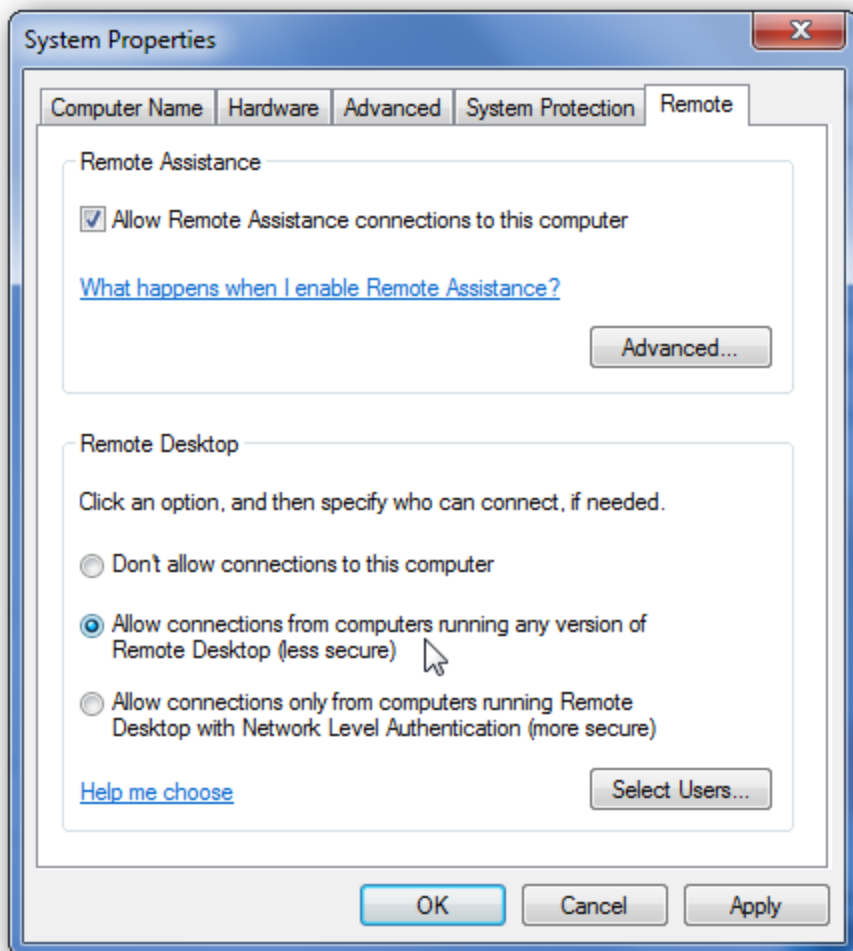
To get to the configuration page, you can either right-click the Computer icon and choose properties, or you can type in *system* into the start menu search box, and then find the entry for System.



Now you click the Remote Settings link on the left hand side. Again, if you are using Windows 8, this is the screen that you'll want to find – or you can search for Remote settings.



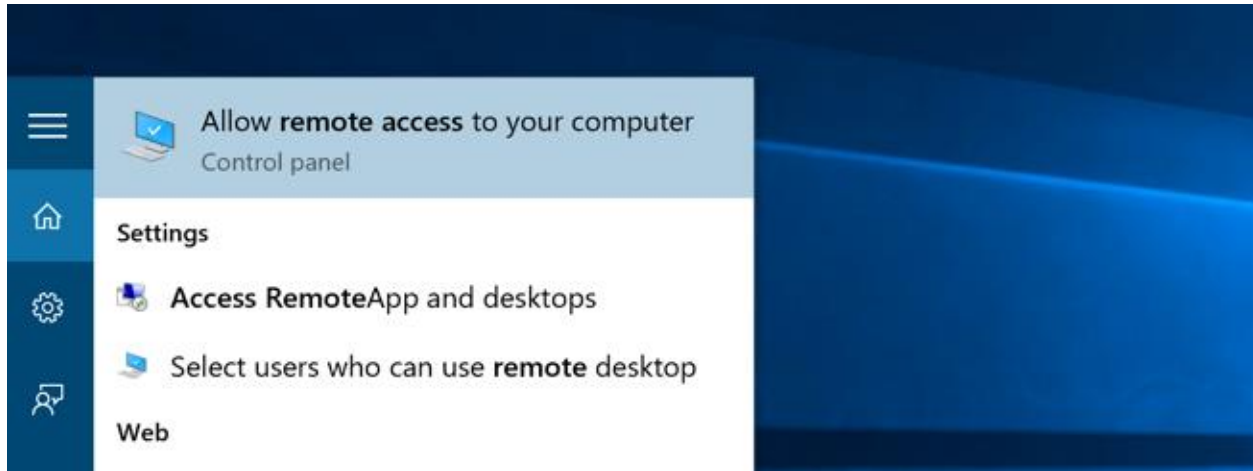
Now you can finally turn it on:



Getting to the Remote Desktop Settings in Windows 8, 8.1, or 10

If you are using Windows 8, 8.1, or 10 you will need to open the desktop Control Panel and find the System panel there. Or you can search for “Remote Access” in the Start Menu or Start Screen.

Once you search, click on the “Allow remote access to your computer” item. It’ll look a little different in Windows 8, but it’s roughly the same thing.



And now you can select “Allow remote connections to this computer” from the Remote tab.

