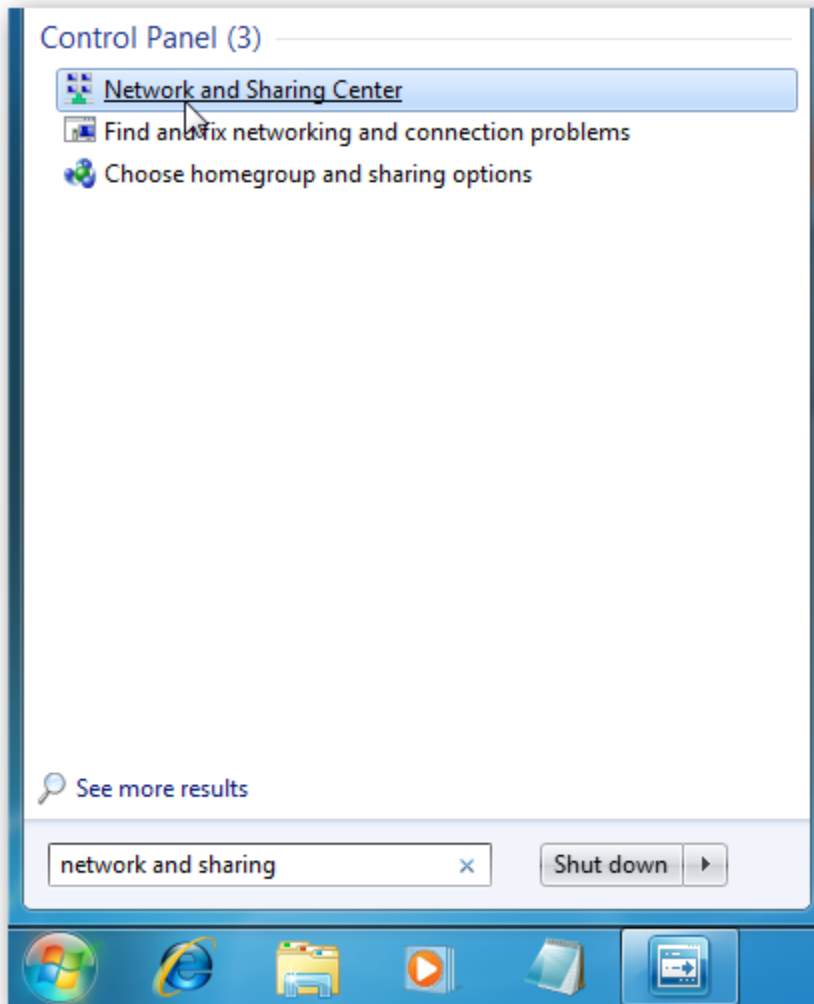


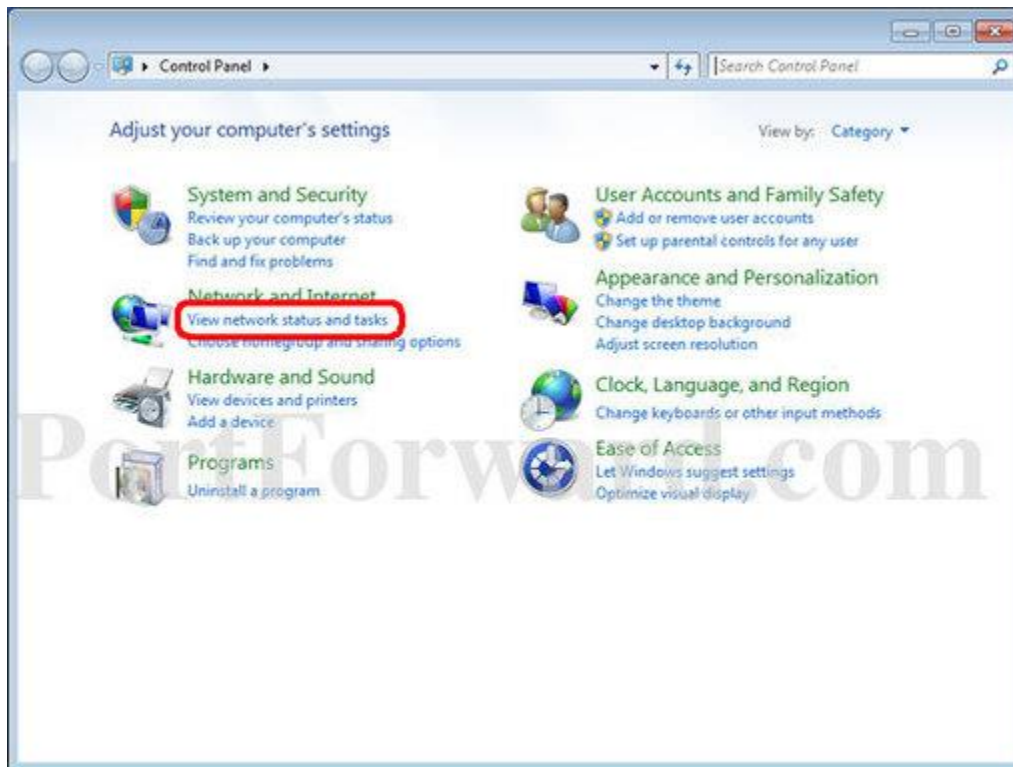
Windows 7 or Windows 8.x or Windows 10

To change the computer's IP address in Windows, type *network and sharing* into the Search box in the Start Menu and select Network and Sharing Center when it comes up. If you are in Windows 8.x it will be on the Start Screen itself, like the screenshot at the top of this article. If you're in Windows 7 or 10 it'll be in the start menu.

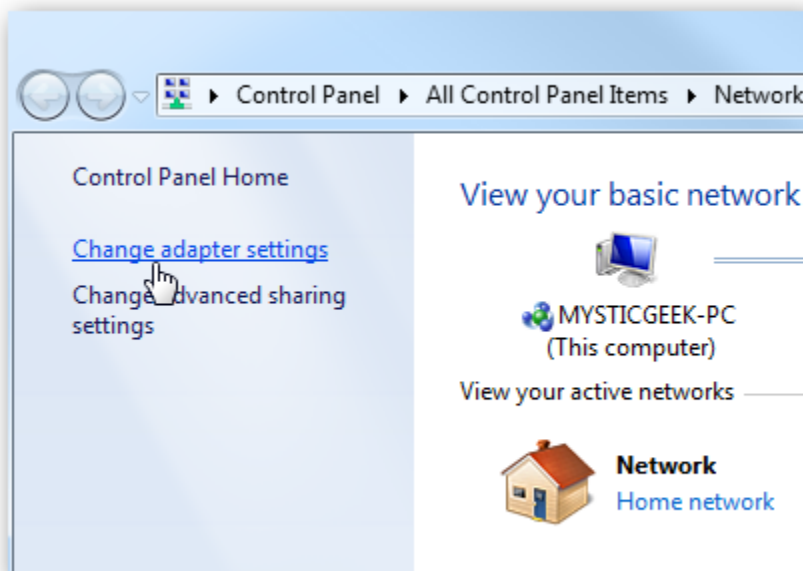


Then when the Network and Sharing Center opens, click on *Change adapter settings*. This will be the same on Windows 7 or 8.x or 10.

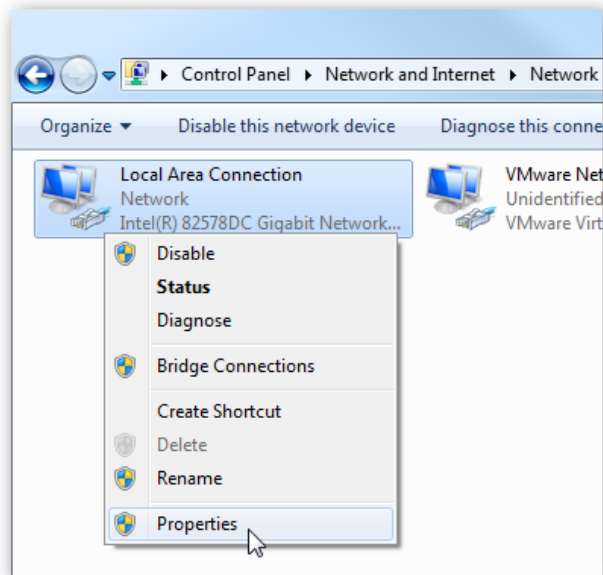
Or else, Open control panel and click “ View Network status and task



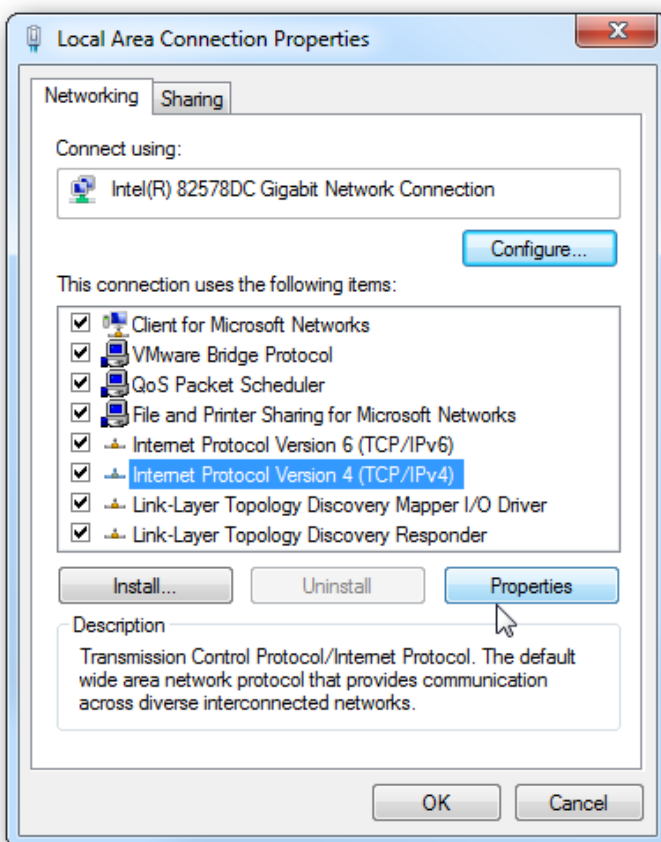
Then when the Network and Sharing Center opens, click on *Change adapter settings*. This will be the same on Windows 7 or 8.x or 10.



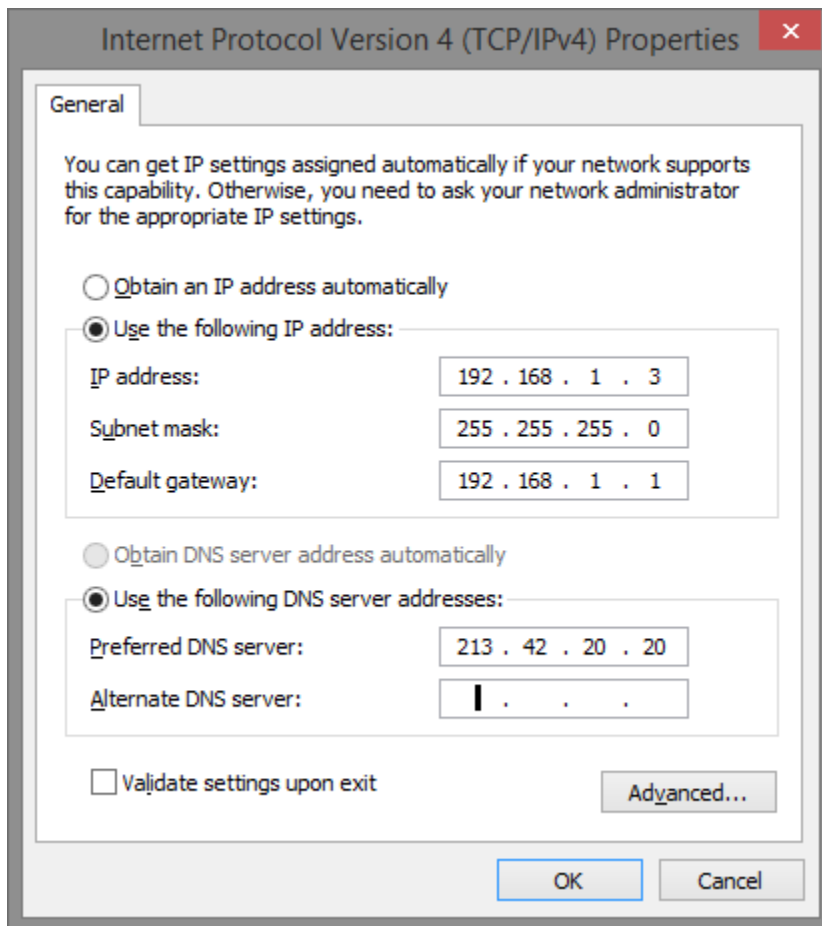
Right-click on your local adapter and select Properties.



In the Local Area Connection Properties window highlight *Internet Protocol Version 4 (TCP/IPv4)* then click the Properties button.



Now select the radio button *Use the following IP address* and enter in the correct IP, Subnet mask, and Default gateway that corresponds with your network setup. Then enter your Preferred and Alternate DNS server addresses.



The image shows a screenshot of the "Internet Protocol Version 4 (TCP/IPv4) Properties" dialog box, specifically the "General" tab. The dialog box has a title bar with a close button (X) in the top right corner. The "General" tab is selected, and the text inside reads: "You can get IP settings assigned automatically if your network supports this capability. Otherwise, you need to ask your network administrator for the appropriate IP settings." Below this text, there are two radio button options. The first is "Obtain an IP address automatically" (unselected). The second is "Use the following IP address:" (selected). Under the second option, there are three input fields: "IP address:" with the value "192 . 168 . 1 . 3", "Subnet mask:" with the value "255 . 255 . 255 . 0", and "Default gateway:" with the value "192 . 168 . 1 . 1". Below these, there are two more radio button options. The first is "Obtain DNS server address automatically" (unselected). The second is "Use the following DNS server addresses:" (selected). Under the second option, there are two input fields: "Preferred DNS server:" with the value "213 . 42 . 20 . 20" and "Alternate DNS server:" with the value "1 . . .". At the bottom left, there is a checkbox labeled "Validate settings upon exit" which is unchecked. At the bottom right, there is a button labeled "Advanced...". At the very bottom of the dialog box, there are two buttons: "OK" and "Cancel".

you should ask your network administrator about the available IP addresses you can use, and it should be in the same range.

You'll need to close out of Local Area Connection Properties for the settings to go into effect.

